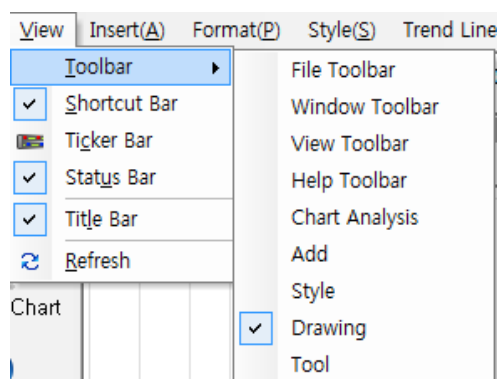


Trend line

* If you choose View / Toolbar / Drawing when you make a Chart Screen on Main, Drawing icons pop up!

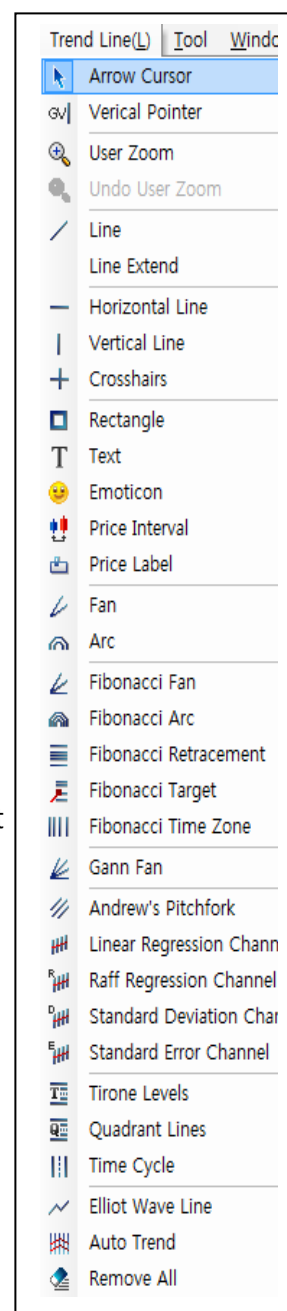


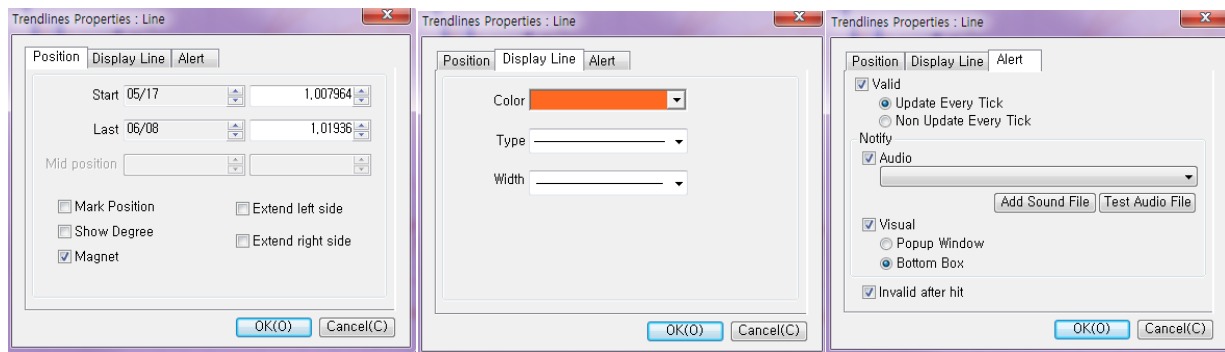
And when you move the Cursor on the icon of Drawing, there is menu name as a Balloon

* Just Click Trend Line or type L when you make a Chart screen on Main,

Drawing icons and menu pop up like as right !

1. Arrow Cursor : Basic-Standard
2. Vertical Pointer : Basic-Standard
3. User Zoom : Basic-Standard
4. Undo User Zoom : Basic
5. Line : Draw a desired tendency line. Left click to adjust the line. Left Click hold to move the entire line.





Position

Start - Start date and value

Last - Last Position date and value

Mid position – N/A

Mark Position – shows value points and dates

Show Degree –Degree of slope

Magnet - Hold left mouse, moves line. Hold right mouse and move chart

Extend left side - Left mouse hold extends the line to the left

Extend right side - Left mouse hold extends the line to the right

Display Line

Color - Dropdown offers color choice

Type - Choose broken lines, dots or combo

Width – Thickness of the line

Alert:

Valid

Select either:

Update Every Tick or Non Update Every Tick -

Notify - Select Audio, Visual or Invalid after hit

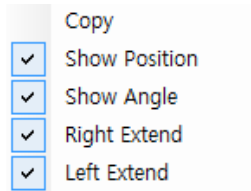
Audio - You can Add Sound File and Test Audio File –

Visual - Choose either:

Popup Window or Bottom Box –

Invalid after hit -

6. Line Extend :



Copy -

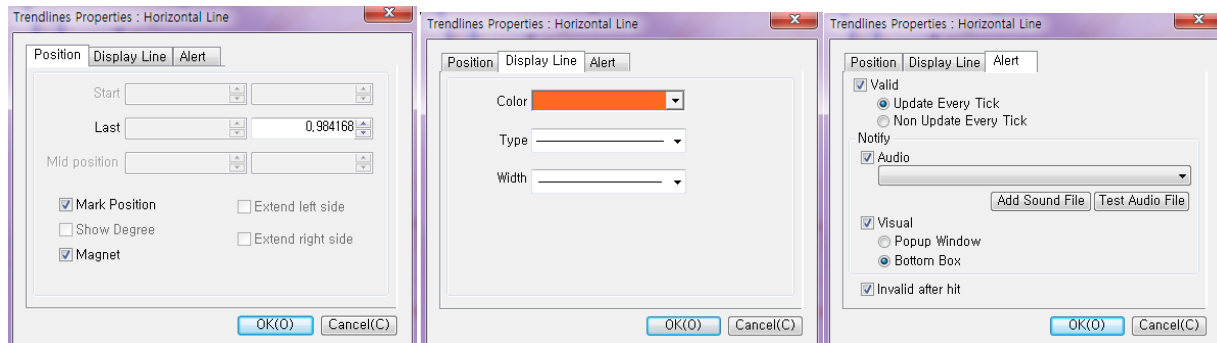
Show Position – Displays the position

Show Angle – Draw the desired slope

Extend left side – if checked, left mouse hold extends the line to the left

Extend right side – If checked, left mouse hold extends the line to the right

7. Horizontal Line : Draw a horizontal line on a chart.



Position :

Start – N/A Last - Last Position date and value Mid position – N/A

Mark Position - shows value points and dates Show Degree – N/A Magnet

– Hold left mouse, moves line. Hold right mouse and move chart

Extend left side – N/A

Extend right side –N/A

Display Line :

Color – Dropdown offers color choice

Type –Choose broken lines, dots or combo

Width – Thickness of the line

Click OK (O) or Cancel (C)

Alert :

Valid – Select either:

Update Every Tick or Non Update Every Tick –

Notify – Select Audio, Visual or Invalid after hit

Audio - Add sound file - , Test Audio File –

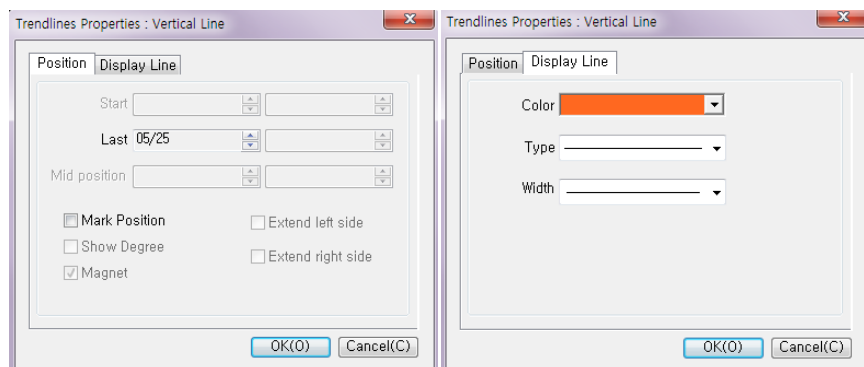
Visual – Choose either:

Popup Window or Bottom Box

Invalid after hit -

Click OK (O) or Cancel (C)

8. Vertical Line : Draw a vertical line on a chart.



Position :

Start – N/A

Last Position - date

Mid position – N/A

Mark Position - shows value points and dates
– N/A

Show Degree – N/A Magnet

Extend left side – N/A

Extend right side – N/A

Display Line :

Color – Select from dropdown menu

Type - Choose broken lines, dots or combo

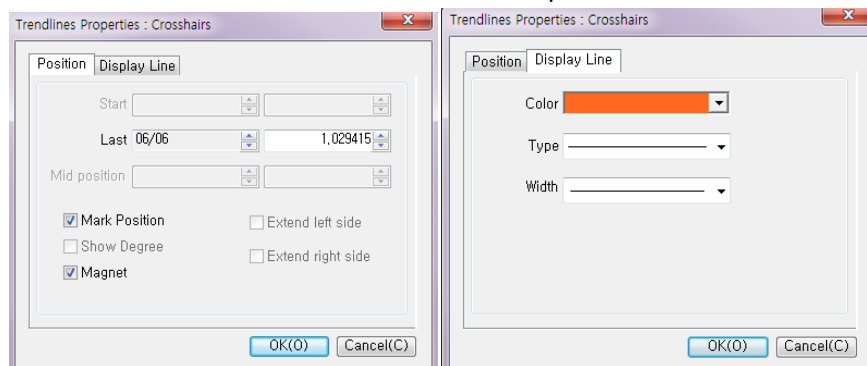
Width - Thickness of the line

Click OK (O) or Cancel (C)

9. Crosshairs : Mark coordination by making a crosshair on a chart.

Right click on the Crosshairs to see the properties, both the Position and Display line

Shows the intersect of the date and the price. Can be moved on the chart.



Position :

Start - N/A Last - Shows date and value

Mid position - N/A

Mark Position - shows value points and dates

Show Degree - N/A Magnet -

- Hold left mouse, moves line. Hold right mouse and move chart

Extend left side - N/A

Extend right side - N/A

Display Line :

Color - Select from dropdown menu

Type - Choose broken lines, dots or combo

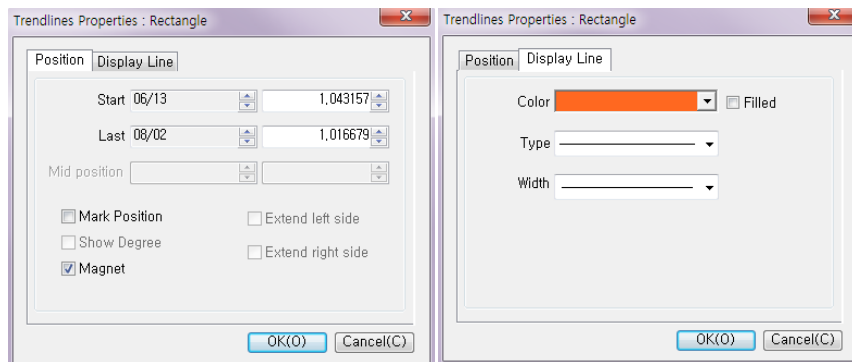
Width - Thickness of the line

Click OK (O) or Cancel (C)

10. Rectangle : Draw a rectangular.

Right click on the rectangle to see the properties, both the Position and Display line

Brackets the start date and price and last position date and price



Position :

Start – Shows start date and value Last – displays last position date and value

Mid position – N/A

Mark Position - shows value points and dates Show Degree – N/A Magnet -
- Hold left mouse, moves line. Hold right mouse and move chart

Extend left side – N/A

Extend right side – N/A

Display Line :

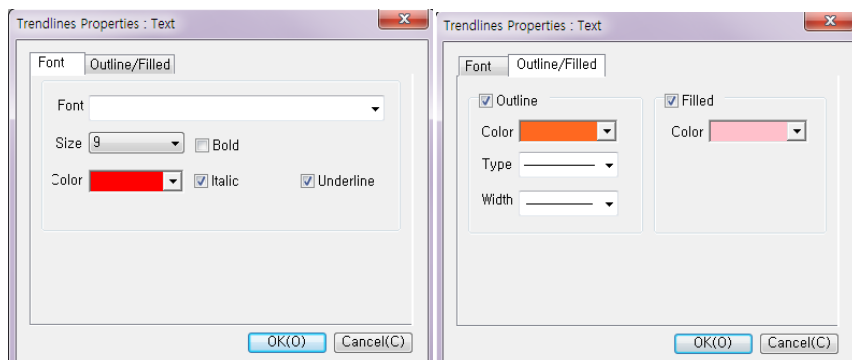
Color - Select from dropdown menu

Type - Choose broken lines, dots or combo

Width - Thickness of the line

Click OK (O) or Cancel (C)

11. Text :



Font :

Font – Choose the font face Size – Select the size Bold – Check box if desired
 Color- Choose the color Italic – Check box if desired Underline – Check box if desired

Outline/Filled :

Outline – Check box

Color – Choose from dropdown menu

Type - Choose broken lines, dots or combo

Width - Thickness of the line

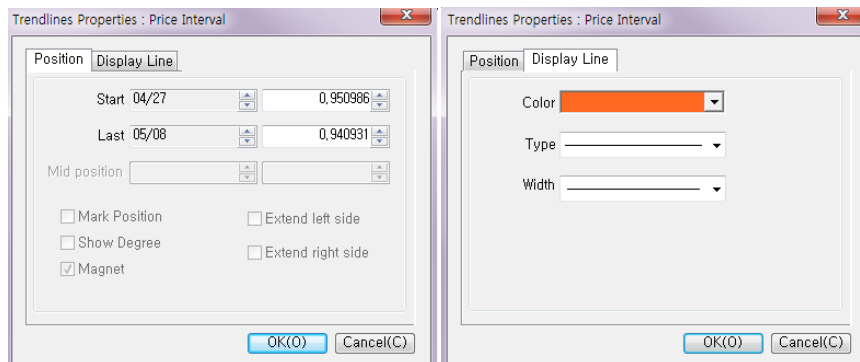
Filled : Check box

Color – Select Filled color from the dropdown menu

12. Emoticon :



13. Price Interval :



Position :

Start - Start date and value

Last – last date and value

Mid position – N/A

Mark Position - N/A

Show Degree - N/A

Magnet - N/A

Extend left side - N/A

Extend right side - N/A

Display Line :

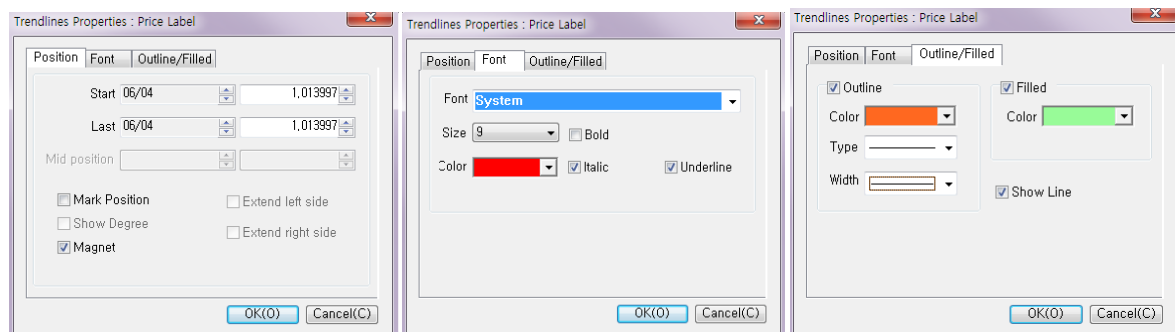
Color - Select from dropdown menu

Type - Choose broken lines, dots or combo

Width - Thickness of the line

Click OK (O) or Cancel (C)

14. Price Label :



Position :

Start - Date and value

Last - Date and value

Mid position - N/A

Mark Position - shows value points and dates

Show Degree - N/A

Magnet - Hold left mouse, moves line. Hold right mouse and move chart

Extend left side - N/A

Extend right side - N/A

Font :

Font - Select Font Style from dropdown Size - Select your Font Size

Color - Choose color from dropdown color window

Bold - Check if desired

Italic - Select if desired

Underline - Choose if desired

Outline/Filled :

Outline - Check box Color - Select from dropdown

Type - Choose broken lines, dots or combo

Width - Thickness of the line

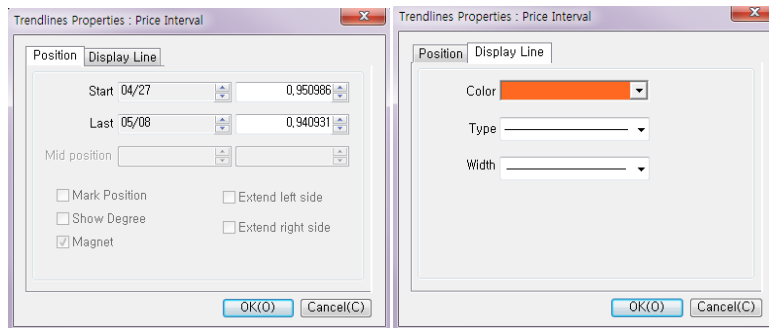
Filled : Check the box

Color - Select color from dropdown window

Show Line – Check the box

Click OK (O) or Cancel (C)

15. Fan :



Position :

Start - Date and value

Last – Date and value

Mid position – N/A

Mark Position - N/A

Show Degree - N/A

Magnet - N/A

Extend left side - N/A

Extend right side - N/A

Display Line :

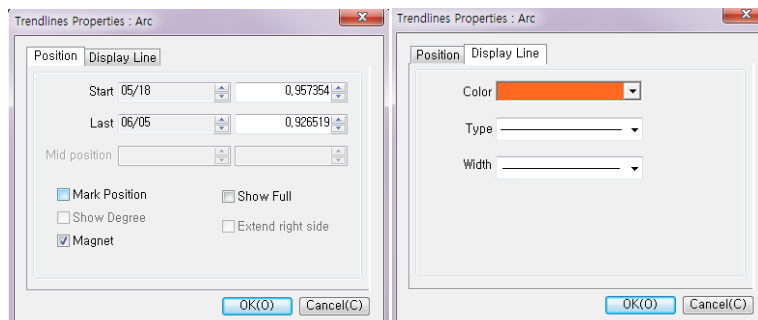
Color - Select from dropdown menu

Type - Choose broken lines, dots or combo

Width - Thickness of the line

16. Click OK (O) or Cancel (C)

Arc : Draw a circular arc.



Position :

Start - Date and value Last - Date and value Mid position - N/A
Mark Position - shows value points and dates Show Degree - N/A
Magnet - Hold left mouse, moves line. Hold right mouse and move chart

Show Full - Shows full arc Extend right side - N/A

Display Line :

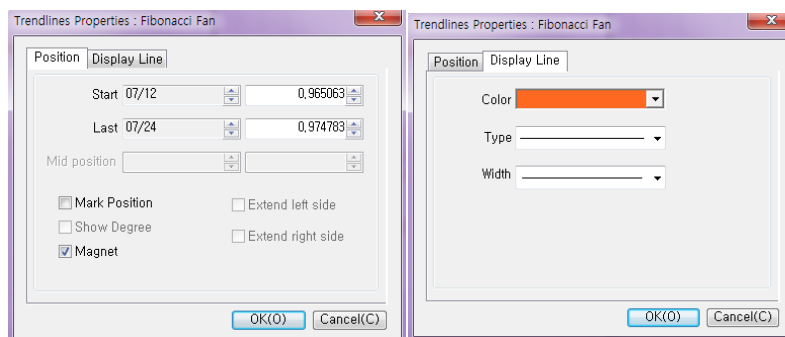
Color - Select from dropdown menu

Type - Choose broken lines, dots or combo

Width - Thickness of the line

Click OK (O) or Cancel (C)

17. Fibonacci Fan : Draw a Fibonacci fan. Click on Fibonacci Fan in Trend Line and click on screen. Fan appears



Position

Start - Set start date and value Last - Show last position and value

Mid position - N/A

Mark Position - shows value points and dates Show Degree - N/A

Magnet - Hold left mouse, moves line. Hold right mouse and move chart

Extend left side - N/A

Extend right side - N/A

18. Display Line :

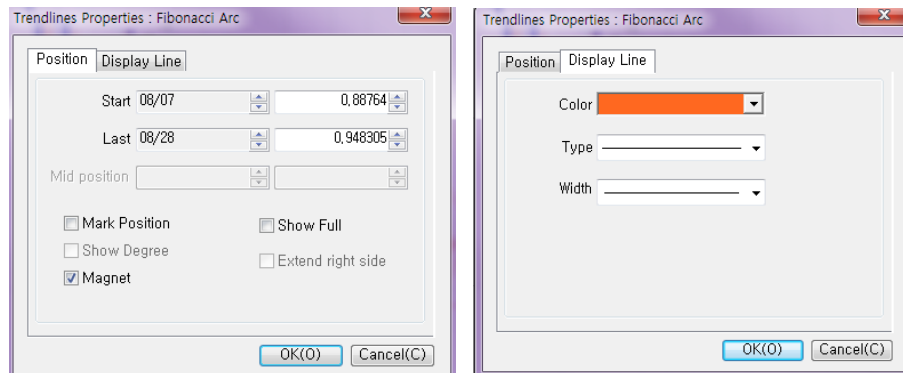
Color - Select from dropdown menu

Type - Choose broken lines, dots or combo

Width - Thickness of the line

Click OK (O) or Cancel (C)

19. Fibonacci Arc : Draw a Fibonacci circular arc.



Position

Start – Set start date and value

Last – Show last position and value

Mid position – N/A

Mark Position – shows value points and dates

Show Degree - N/A

Magnet - Hold left mouse, moves line. Hold right mouse and move chart

Extend right side - N/A

Display Line

Color - Select from dropdown menu

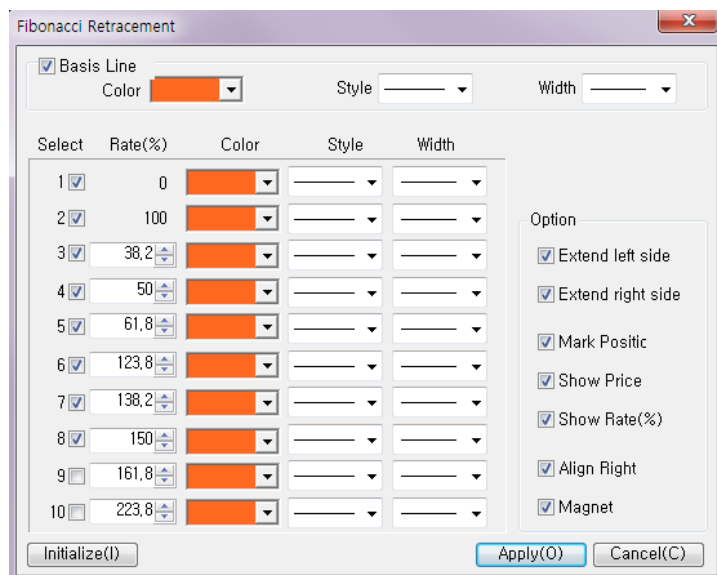
Type - Choose broken lines, dots or combo

Width - Thickness of the line

Click OK (O) or Cancel (C)

-

20. Fibonacci Retracement : Show Fibonacci compensation rated.



Basis Line:

Color - Select from dropdown menu

Style - Choose broken lines, dots or combo

Width - Thickness of the line

Check the selection boxes at the left. You can change the Rate % using the up down arrows.

Set your colors from each dropdown menu. If you click initialize the colors will default to the original setting and the Option column will uncheck each box that follows except Align Right and Magnet

You can extend right or left by right clicking on the retracement

Option:

Extend left side - Widens retracement to the left

Extend right side - Widens retracement to the right

Mark Positic - if checked shows value and date

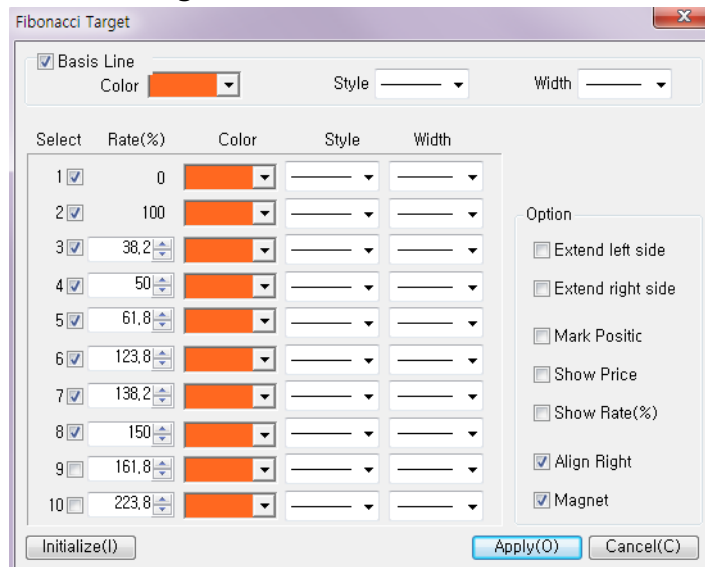
Show Price - Shows price next to rate

Show Rate(%) - shows rate on the left side

Align Right - Set right

Magnet - Hold left mouse, moves line. Hold right mouse and move chart

21. Fibonacci Target :



Basis Line:

Color - Select from dropdown menu

Style - Choose broken lines, dots or combo

Width - Thickness of the line

Check the selection boxes at the left. You can change the Rate % using the up down arrows.

Set your colors from each dropdown menu. If you click initialize the colors will default to the original setting and the Option column will uncheck each box that follows except Align Right and Magnet

You can extend right or left by right clicking on the Target

Option:

Extend left side - Widens retracement to the left

Extend right side - Widens retracement to the right

Mark Positic - if checked shows value and date

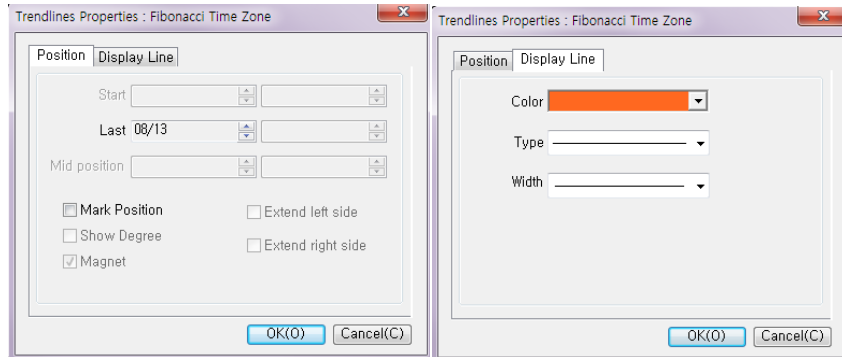
Show Price - Shows price next to rate

Show Rate(%) - shows rate on the left side

Align Right - Set right

Magnet - Hold left mouse, moves line. Hold right mouse and move chart

22. Fibonacci Timezone : Show Fibonacci timezone.



Position

Start - N/A

Last – Position date- use up/down arrows

Mid position – N/A

Mark Position - shows value points and dates

Show Degree - N/A

Magnet - N/A

Extend left side - N/A

Extend right side - N/A

Display Line

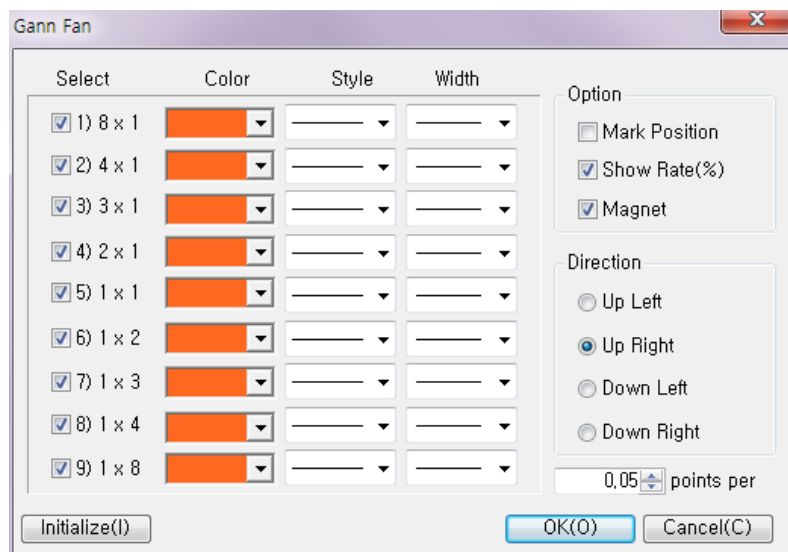
Color - Select from dropdown menu

Type - Choose broken lines, dots or combo

Width - Thickness of the line

Click OK (O) or Cancel (C)

23. Gann Fan : Draw Gann circular arc. Click on Gann Fan in the Trend Line dropdown. Left click and the Fan appears.



Option:

Mark Position – Show the value and date

Show Rate(%) – Show for selected items

Magnet - Hold left mouse, moves line. Hold right mouse and move chart

Direction

Up Left – Goes from right to left

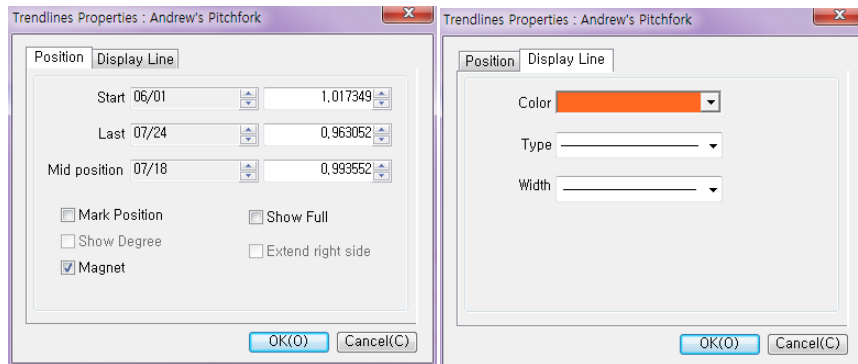
Up Right – Goes from left to right

Down Left – Displays down from right to left

Down Right - Displays down from left to right

() points per: Set with up/down arrow

24. Andrews Pitchfork : Draw Andrew Pitchfork line.



Position

Start – Set start date and value up/down arrows Last - Mid position – Set date and value

Mark Position - shows value points and dates

Show Degree - N/A

Magnet - Hold right mouse and move chart

Show Full - Extend right side - N/A

Extend left side by right clicking on the line

Display Line

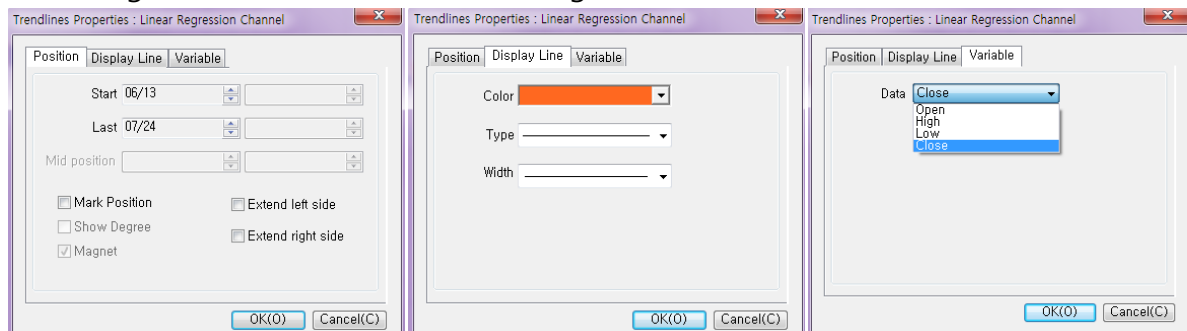
Color - Select from dropdown menu

Type - Choose broken lines, dots or combo

Width - Thickness of the line

Click OK (O) or Cancel (C)

Linear Regression Channel : Draw linear regression channel.



Position :

Start – Select Date

Last – Choose Date

Mid position – N/A

Mark Position - shows value points and dates

Show Degree - N/A

Magnet - N/A

Right click on line and Extend left side or Extend right side. Un check to return

Display Line :

Color - Select from dropdown menu

Type - Choose broken lines, dots or combo

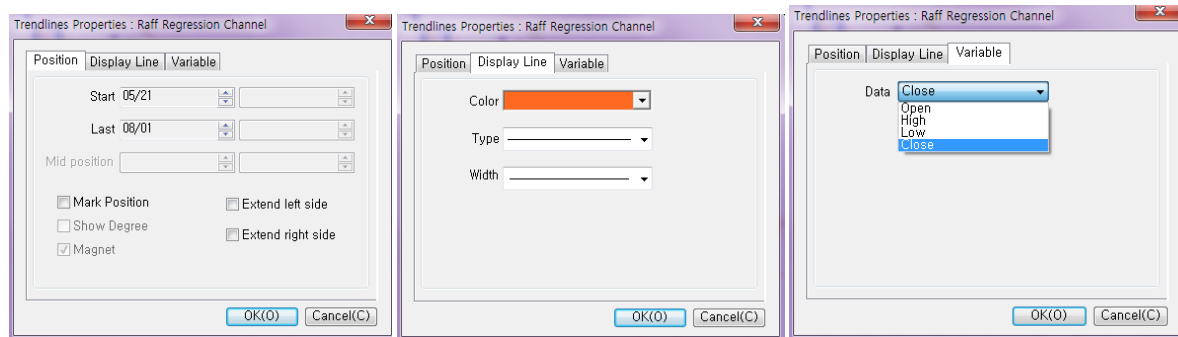
Width - Thickness of the line

Click OK (O) or Cancel (C)

Variable :

Data - Close, Open, High, Low

25. Raff Regression Channel : Draw Raff regression channel. Left click on Trend Line dropdown for Raff Regression Channel. Move cursor over chart



Position :

Start – Select Date

Last – Choose Date

Mid position – N/A

Mark Position - shows value points and dates

Show Degree - N/A

Magnet - N/A

Extend left side – right click on the line Extend right side - right click on the line

Uncheck to undo

Display Line :

Color - Select from dropdown menu

Type - Choose broken lines, dots or combo

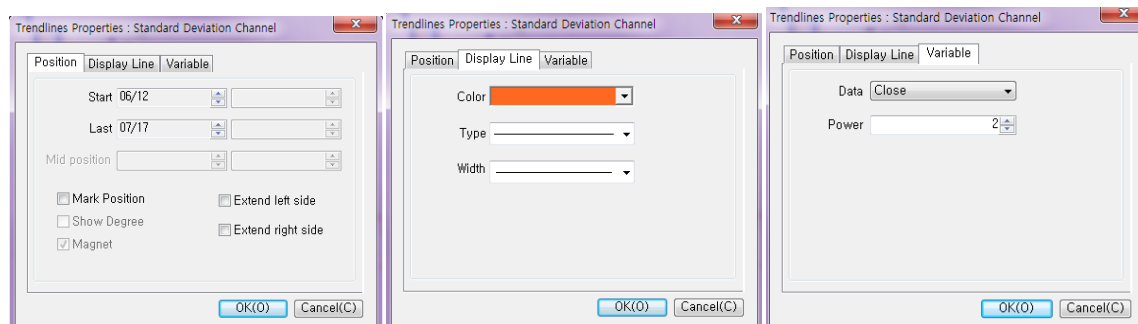
Width - Thickness of the line

Click OK (O) or Cancel (C)

Variable :

Data - Open, High, Low, Close, Choose one and click OK to change the chart.

26. Standard Deviation Channel : Draw standard deviation channel.



Position :

Start – Select Date

Last – Choose Date

Mid position – N/A

Mark Position - shows value points and dates

Show Degree - N/A

Magnet - N/A

Extend left side - right click on the line

Extend right side - right click on the line

Display Line :

Color - Select from dropdown menu

Type - Choose broken lines, dots or combo

Width - Thickness of the line

Click OK (O) or Cancel (C)

Variable :

Data - Open, High, Low, Close,

Power – Set with up/down arrows

Click OK (O) or Cancel (C)

27. Standard Error Channel : Draw standard error channel.

Mark Position - shows value points and dates

Show Degree - N/A

Magnet - N/A

Extend left side - Check box and OK

Extend right side - Check box and OK

Display Line :

Color - Select from dropdown menu

Type - Choose broken lines, dots or combo

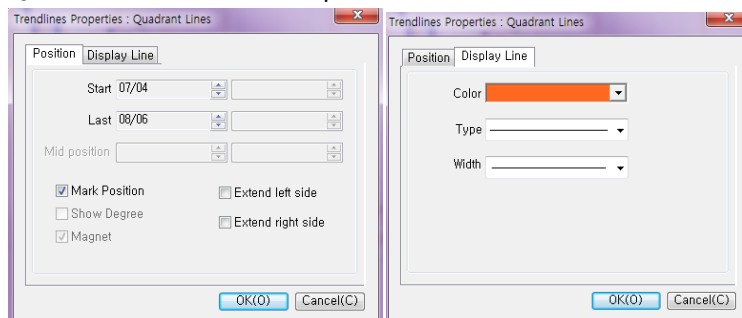
Width - Thickness of the line

Click OK (O) or Cancel (C)

Variable : Choose either:

Mid Point Mean

29. Quadrant Lines : Draw quadrant lines



Position :

Start - Date

Last position- Date

Mid position - N/A

Mark Position - shows value points and dates

Show Degree - N/A

Magnet - N/A

Extend left side - Check box and OK

Extend right side - Check box and OK

Display Line :

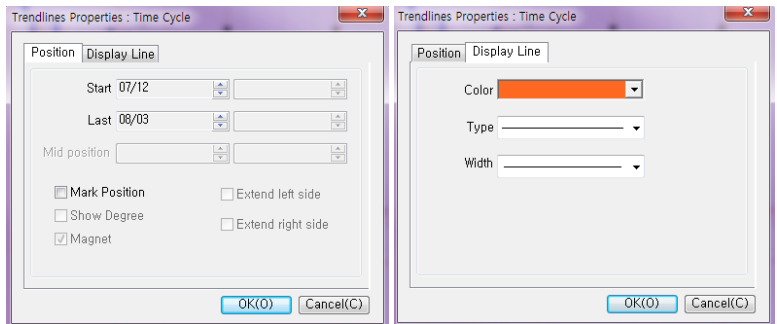
Color - Select from dropdown menu

Type - Choose broken lines, dots or combo

Width - Thickness of the line

Click OK (O) or Cancel (C)

30. Time Cycle : Draw time cycle.



Position :

Start - Date

Last position- Date

Mid position – N/A

Mark Position - shows value points and dates

Show Degree - N/A

Magnet - N/A

Extend left side - N/A

Extend right side - N/A

Display Line :

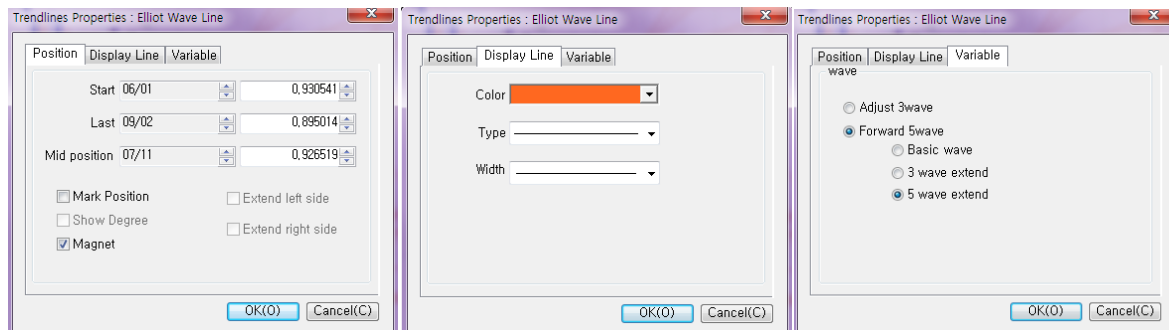
Color - Select from dropdown menu

Type - Choose broken lines, dots or combo

Width - Thickness of the line

Click OK (O) or Cancel (C)

Elliott Wave Line : Draw Elliott wave.



Position

Start - Date

Last position- Date

Mid position – Set date

Mark Position – shows value points and dates

Show Degree - N/A

Magnet - Hold right mouse and move chart

Extend left side - N/A

Extend right side - N/A

Display Line

Color - Select from Drop down menu

Type - Choose broken lines, dots or combo

Width - Thickness of the line

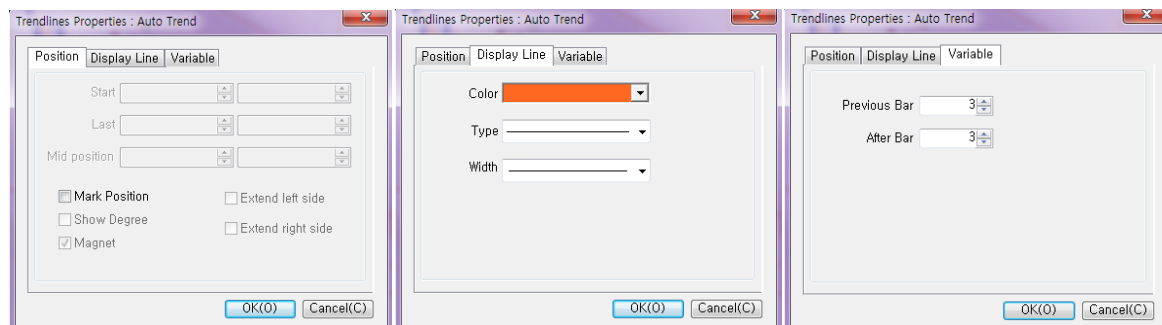
Click OK (O) or Cancel (C)

Variable

Adjust 3 waves or Forward 5 waves and OK

Select either Basic wave, 3 wave extend or 5 wave extend and chart will update

31. Auto Trend : Draw auto trend line.



Position :

Start - N/A

Last - N/A

Mid position – N/A

Mark Position – shows value points and dates

Show Degree - N/A

Magnet -

Extend left side - N/A

Extend right side - N/A

Display Line

Color - Select from dropdown menu

Type - Choose broken lines, dots or combo

Width - Thickness of the line

Click OK (O) or Cancel (C)

Variable

Previous Bar – Use up/down arrows for chart changes

After Bar - Use up/down arrows for chart changes

32. Remove All : Remove all trend lines applied at chart.

